

DiamondCare® Console Outlet DISS Key Style

SPECIFICATION

Console Outlet

The DiamondCare® Console Outlet is available in a DISS Key Style for each of the medical gas services listed in the table on page 2. Each console outlet consists of a rough-in assembly and a frontbody assembly. An optional finish faceplate is available.

Rough-In Assembly

The rough-in assembly is available with a copper inlet tube (piped backbody) or a DISS male inlet fitting (DISS backbody) for connection to a gas delivery line. The piped rough-in assembly includes a 7" (18cm) long, type K copper, inlet tube for brazing to the gas delivery line. This inlet tube rotates 360°, which permits alignment with the gas line. Both the piped and DISS rough-in assemblies consist of a steel backplate with a non-removable, positive pin-keying arrangement for each specific gas service. The specific gas service is stamped into the front of the rough-in. Both types of rough-in assemblies include a fully serviceable secondary check (for pressurized gases) to help prevent gas flow when the frontbody is removed for service. Vacuum and WAGD services do not have secondary check valves, according to NFPA 99 standards.

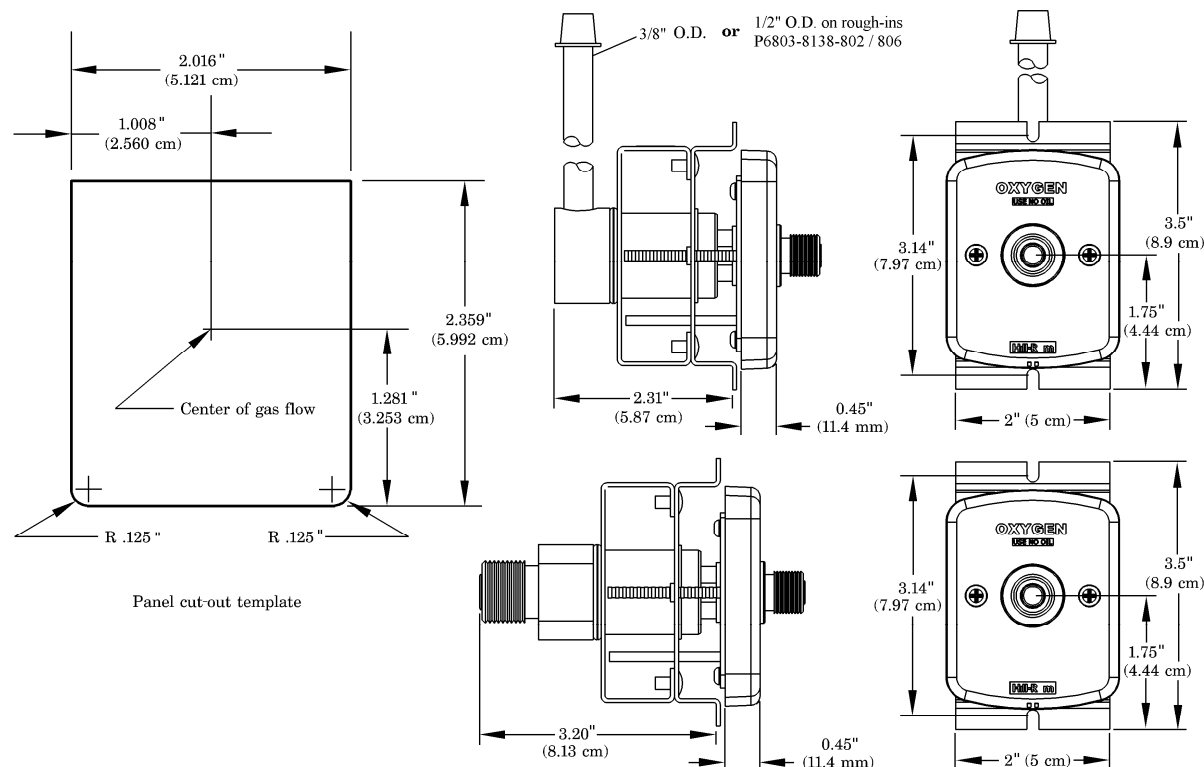
Frontbody Assembly

The console frontbody consists of a DISS keying disc and attached barrel assembly, which houses the primary check valve. The keying disc assembly includes a gas-specific, positive pin-keying device, is color-coded, and labeled with the name of the gas service. The barrel assembly includes brass piston and frontbody check spring, which engage and seal when a DISS-fitted treatment device is removed from the outlet.

Features

- Quick access to primary check valve components.
- Large, gas-specific, color-coded, keying disc and label.
- Outlets listed by Underwriters Laboratories® and CSA® and manufactured in accordance with applicable CGA, NFPA 99 and CSA® standards.
- Cleaned for oxygen service, pressure-tested, and capped prior to shipping.

Product Dimensions

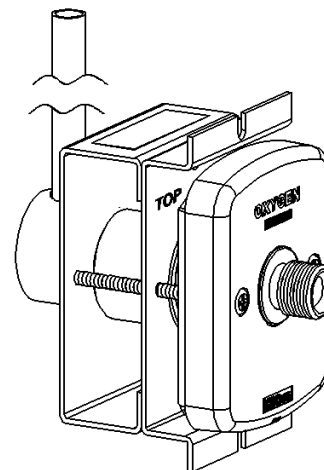


t005c002

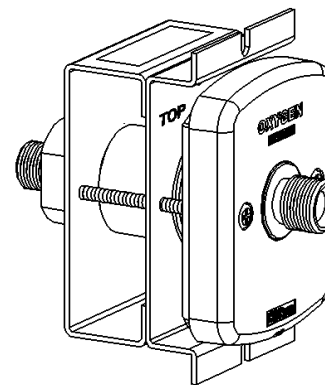
Ordering Information

You can order a DiamondCare® Console Outlet as a complete assembly (rough-in and frontbody) or as individual assemblies. Each rough-in and frontbody assembly is individually packaged.

Gas Service ⁽¹⁾	DISS Key Style Complete Assembly	DISS Key Style Finish Assembly Only	Rough-in Assembly Only
O ₂	<input type="checkbox"/> 6803-8110-200	<input type="checkbox"/> 6803-8110-800	<input type="checkbox"/> 6803-8138-800H
N ₂ O	<input type="checkbox"/> 6803-8110-201	<input type="checkbox"/> 6803-8110-801	<input type="checkbox"/> 6803-8138-801H
Vacuum	<input type="checkbox"/> 6803-8110-202	<input type="checkbox"/> 6803-8110-802	<input type="checkbox"/> 6803-8138-802
Air	<input type="checkbox"/> 6803-8110-203	<input type="checkbox"/> 6803-8110-803	<input type="checkbox"/> 6803-8138-803H
CO ₂	<input type="checkbox"/> 6803-8110-204	<input type="checkbox"/> 6803-8110-804	<input type="checkbox"/> 6803-8138-804H
N ₂	<input type="checkbox"/> 6803-8110-205	<input type="checkbox"/> 6803-8110-805	<input type="checkbox"/> 6803-8138-805H
WAGD ⁽²⁾	<input type="checkbox"/> 6803-8110-206	<input type="checkbox"/> 6803-8110-806	<input type="checkbox"/> 6803-8138-806
O ₂ /CO ₂ mix	<input type="checkbox"/> 6803-8110-207	<input type="checkbox"/> 6803-8110-807	<input type="checkbox"/> 6803-8138-807H
IAir	<input type="checkbox"/> 6803-8110-218	<input type="checkbox"/> 6803-8110-818	<input type="checkbox"/> 6803-8138-818H



Gas Service ⁽¹⁾	DISS Key Style Complete Assembly	DISS Key Style Finish Assembly Only	Rough-in Assembly Only
O ₂	<input type="checkbox"/> 6803-8110-300	<input type="checkbox"/> 6803-8110-800	<input type="checkbox"/> 6803-8130-800
N ₂ O	<input type="checkbox"/> 6803-8110-301	<input type="checkbox"/> 6803-8110-801	<input type="checkbox"/> 6803-8130-801
Vacuum	<input type="checkbox"/> 6803-8110-302	<input type="checkbox"/> 6803-8110-802	<input type="checkbox"/> 6803-8130-802
Air	<input type="checkbox"/> 6803-8110-303	<input type="checkbox"/> 6803-8110-803	<input type="checkbox"/> 6803-8130-803
CO ₂	<input type="checkbox"/> 6803-8110-304	<input type="checkbox"/> 6803-8110-804	<input type="checkbox"/> 6803-8130-804
N ₂	<input type="checkbox"/> 6803-8110-305	<input type="checkbox"/> 6803-8110-805	<input type="checkbox"/> 6803-8130-805
WAGD ⁽²⁾	<input type="checkbox"/> 6803-8110-306	<input type="checkbox"/> 6803-8110-806	<input type="checkbox"/> 6803-8130-806
O ₂ /CO ₂ mix	<input type="checkbox"/> 6803-8110-307	<input type="checkbox"/> 6803-8110-807	<input type="checkbox"/> 6803-8130-807
IAir	<input type="checkbox"/> 6803-8110-318	<input type="checkbox"/> 6803-8110-818	<input type="checkbox"/> 6803-8130-818



(1) ISO labeled configurations are also available.

(2) WAGD: Waste Anesthetic Gas Disposal
(formerly evacuation)